



| EN | OPERATING MANUAL



6WN1 - 10WN1 - 15WN2 - 20WN2 - 40WN3  
5WL1 - 7WL1 - 10WL2 - 15WL2 - 20WL3

**polarik®**

*The premium quality monoblock unit*



Please read this manual before you install and operate the monoblock unit.

After reading the operating manual, keep it in a safe place for future reference.

Copyright© by GOVI GmbH **2021**.

The reproduction and copying of this document, in part or in whole, are prohibited. We reserve the right to make technical changes in the course of further development.

## **GOVI GmbH**

Max-Planck-Str. 5

53842 Troisdorf (Germany)

Tel: +49 2241 92 29 460

Fax: +49 2241 92 30 390

e-mail: [info-polarik@govi-gmbh.de](mailto:info-polarik@govi-gmbh.de)

[www.govi-gmbh.de](http://www.govi-gmbh.de)

## Contents

<b>1</b>	<b>General points.....</b>	<b>6</b>
1.1	Intended use.....	6
1.2	Conditions of use.....	6
1.3	Personnel .....	7
1.4	Spare parts.....	7
1.5	Environmental regulations .....	7
1.6	Disposal of the unit .....	8
<b>2</b>	<b>Safety .....</b>	<b>9</b>
2.1	Safety messages and safety-alert symbols.....	9
2.2	Other terms and symbols .....	9
2.3	Safety and hazard precautions.....	9
2.4	Refrigerant-handling precautions .....	12
2.5	First aid.....	13
<b>3</b>	<b>Technical data .....</b>	<b>14</b>
3.1	Monoblock units 6 WN1, 10 WN1, 5 WL1 and 7 WL1 .....	15
3.2	Monoblock units 15 WN2, 20 WN2, 10 WL2, 15 WL2 .....	18
3.3	Monoblock units 40 WN3, 20 WL3 .....	21
<b>4</b>	<b>Packing, transport and storage .....</b>	<b>24</b>
4.1	Transport .....	25
4.2	Storage .....	25
<b>5</b>	<b>System description.....</b>	<b>26</b>

<b>6</b>	<b>Installation.....</b>	<b>29</b>
6.1	Conditions for installation.....	29
6.2	Installation of the units .....	30
6.1.1	General preparation .....	30
6.1.2	Hanging installation of the unit (removable top) .....	31
6.1.3	Embedded installation of the unit (installation opening).....	33
6.1.4	Final tasks .....	35
6.3	Installation of accessories .....	36
<b>7</b>	<b>Operating elements.....</b>	<b>37</b>
7.1	LED indicators .....	38
7.2	Function keys .....	39
<b>8</b>	<b>Commissioning.....</b>	<b>40</b>
<b>9</b>	<b>Operation.....</b>	<b>42</b>
9.1	Switching the monoblock unit on and off .....	43
9.2	Unblocking the function keys .....	43
9.3	Setting the nominal temperature .....	43
9.4	Switching the lamp on and off.....	44
9.5	Manual defrost.....	44
<b>10</b>	<b>Maintenance .....</b>	<b>45</b>
10.1	Cleaning procedure .....	46
10.1.1	Cleaning of components inside the cold room .....	46
10.1.2	Cleaning of external components .....	47
<b>11</b>	<b>Faults .....</b>	<b>48</b>



---

11.1	Troubleshooting .....	48
11.2	Error codes.....	50
<b>12</b>	<b>Appendix.....</b>	<b>51</b>
12.1	Wiring diagrams.....	51

## 1 General points

GOVI provides this manual for information purposes only. The information supplied in this manual should at no time be regarded as all-inclusive or covering all contingencies. For further information, please contact your GOVI distributor.

To ensure the durability of GOVI products, please follow the instructions in this manual.

### 1.1 Intended use

This monoblock unit is designed for use in cold rooms that are not exposed to any explosion or fire hazard. In order to perform its function, the monoblock unit is attached to the wall of the cold room by means of mechanical fastening systems.

- The monoblock unit is not designed for operation in locations classed as AP. PE EEx (explosion hazard).
- The monoblock unit is not designed for use in places exposed to fire hazard.
- The monoblock unit is designed for indoor use only.

The monoblock unit is not intended for any use other than as described above. All other usage shall be considered improper, and is either prohibited or requires the approval/permission of the manufacturer.

Unauthorised modification or manipulation of the monoblock unit will immediately void GOVI's warranty, obligations, unless GOVI has granted express written consent in advance. GOVI shall accept no liability for personal injury or material damage resulting from unauthorised modification.

"Intended purpose" also includes compliance with specified maintenance and repair-work requirements. *See section 10 "Maintenance" (page 45).*

### 1.2 Conditions of use

Ensure that the cold room in which you intend to install the monoblock unit is properly ventilated and fitted with an extraction system. Ensure also that you leave sufficient space for proper maintenance access.

Do not expose the monoblock unit to direct sunlight.

Ensure proper air circulation when placing items inside the refrigerated unit, and be careful not to block the refrigeration-unit evaporator. Do not place heat-emitting items in the refrigerated unit.

### **1.3 Personnel**

All persons engaged to work on the monoblock unit as described in this operating manual must be suitably trained and qualified, and able to assess the work to be carried out and identify possible hazards.

### **1.4 Spare parts**

Use only original spare parts or parts approved by GOVI. Please note that spare parts and accessories not supplied by GOVI are neither tested nor approved. GOVI can accept no responsibility or warranty liability for loss or damage arising from the use of non-original spare parts.

### **1.5 Environmental regulations**

GOVI supplies the monoblock unit ready-filled with refrigerant.

If you detect any fault in the refrigerant circuit, or signs of leakage from the monoblock unit, have the device examined and repaired by a qualified specialist.

DO NOT allow refrigerant to escape into the open air.

Please read the safety instructions and hazard warnings in [section 2.3 "Safety and hazard precautions" \(page 9\)](#), as well as the manufacturer's data sheet for the refrigerant concerned. The corresponding data sheets can be downloaded from the GOVI website.

Dispose of defective refrigeration units and drained-off refrigerant in accordance with applicable environmental regulations.

## 1.6 Disposal of the unit



### **WARNING**

**Incorrect dismantling of the monoblock unit may result in personal-injury hazard or danger to the environment.**

**Engage only trained and qualified specialists to disassemble the monoblock unit.**

**Take special care when handling the refrigerant.**

The customer is responsible for proper disposal of the monoblock unit.

When you eventually scrap the monoblock unit, follow the corresponding local waste-disposal regulations, and engage, if necessary, the services of a specialist organisation.

Designation	Material
Structure	sheet steel, ferrous materials
Condenser, evaporator	aluminium, copper
Electrical components	copper, PVC, miscellaneous materials
Compressor	steel, copper and other materials
	compressor oil
Refrigerant (standard)	see <a href="#">section 3 "Technical data" (page 14)</a> .
Refrigerant quantity	see <a href="#">section 3 "Technical specifications" (page 14)</a> .
Coating	epoxide compound

*Tab. 1: List of materials*



## 2 Safety

### 2.1 Safety messages and safety-alert symbols



#### **DANGER**

Failure to observe these instructions is likely to result in irreversible, or even fatal, injury.



#### **WARNING**

Failure to observe these instructions may result in irreversible, or even fatal, injury.



#### **CAUTION**

Failure to observe these instructions may result in personal injury and/or damage to equipment or the environment.

### 2.2 Other terms and symbols

“Note” texts do not contain any safety-related items.



Items marked “note” contain helpful tips, as well as additional information.

### 2.3 Safety and hazard precautions



#### **WARNING**

**Danger of fatal electric shock**

**Before starting work of any kind on the monoblock unit, disconnect it from the power supply and ensure that it cannot be reactivated by accident.**

**Take suitable steps to prevent the monoblock unit from being switched back on while work is in progress.**

**WARNING**

**Danger of fatal electric shock**

**Strictly observe the following safety rules when working on the monoblock unit's electrical system:**

- **Switch OFF.**
- **Block the switch to prevent accidental reactivation.**
- **Disconnect the power supply.**
- **Connect to earth (ground) and short-circuit.**
- **Cover or isolate all nearby live components.**

**Electrical connection of the monoblock unit must be carried out by a qualified electrician.**

**WARNING**

**Toxic gas hazard**

**The refrigerant contained in the monoblock unit may produce toxic fumes if exposed to a naked flame or an electrical spark. These fumes are severe respiratory irritants, potentially capable of causing death.**

**The refrigerant tends to displace air, causing oxygen depletion, which may result in death by asphyxiation.**

**Take special care when working on the monoblock unit, particularly in an enclosed or confined space with a limited supply of fresh air.**

**WARNING**

**Fire and explosion hazard from flammable materials.**

**DO NOT** expose to naked flames, electrical sparks or other sources of ignition.

**NO SMOKING** Observe fire/explosion-prevention measures.



#### **WARNING**

**Danger arising from unauthorised modification**

**DO NOT** drill any extra holes into the monoblock unit, as this may damage important components. Damage to electrical wiring or refrigerant conduits may cause a fire.



#### **WARNING**

**Risk of damage to health from leaking refrigerant**

Liquid refrigerant or fumes may leak out during maintenance or repair work involving the refrigerant circuit. These emissions can pose a threat to human health and the environment.

**Always** use suitable personal protective equipment (including goggles, respiratory mask and protective gloves) if leaking refrigerant is present.



#### **CAUTION**

**Burn hazard**

Certain parts of the monoblock unit (e.g. the condenser, evaporator and tubes) may still be hot after operation.

Let them cool down sufficiently before starting work on the monoblock unit.



#### **CAUTION**

**Risk of long-term damage to the environment**

The operating materials (refrigerant and compressor oil) are **NOT** biodegradable. Observe the safety data sheets or operating instructions supplied with the materials used.

**Observe** the corresponding local environmental regulations when disposing of items that have been contaminated with operating materials.

**CAUTION**

**Risk of injury from sharp edges and rotating parts.**

**Keep your distance from rotating fan blades, and beware of the sharp sheet-metal edges under the main cover.**

**Contact with these sharp edges, especially the fan blades, can result in injury.**

## **2.4 Refrigerant-handling precautions**

Although the refrigerants used are classed as “safe”, you should still observe certain precautions during the handling, installation and maintenance of the monoblock unit.

Liquid refrigerants evaporate rapidly when released into the atmosphere, and quickly ice up everything that they touch.

Skin contact can lead to severe, frostbite-like injury.

## 2.5 First aid

In the event of eye contact with refrigerant or compressor oil, rinse the affected eye(s) immediately with abundant clean water (for at least **15** minutes), and seek medical attention.

In the event of skin burn, protect the affected area(s) from further contact with the refrigerant, and take the following immediate measures:

- Remove refrigerant-contaminated clothing and footwear.
- Thoroughly rinse off the refrigerant with abundant lukewarm water.
- DO NOT apply heat (e.g. by rubbing or with a hot-water bottle).
- Seek medical attention immediately. While you are waiting for help to arrive, cover the affected area as loosely as possible with a large sterile dressing.

In the event of inhalation of refrigerant, seek medical attention immediately and bring the injured person into the fresh air. Administer artificial respiration if required.

### 3 Technical data

The monoblock unit consists of a self-supporting chassis made of galvanized sheet metal and a front cover made of coated ABS.



Fig. 1: Nameplate

The nameplate carries the serial number of the monoblock unit, together with other important technical data.

The nameplate is on the right-hand side of the main cover, near the electrical connection point.

Always have the serial number of the monoblock unit to hand when contacting us, as this will ensure the fast and smooth processing of your enquiry.

### 3.1 Monoblock units 6WN1 10 WN1, 5 WL1 and 7 WL1

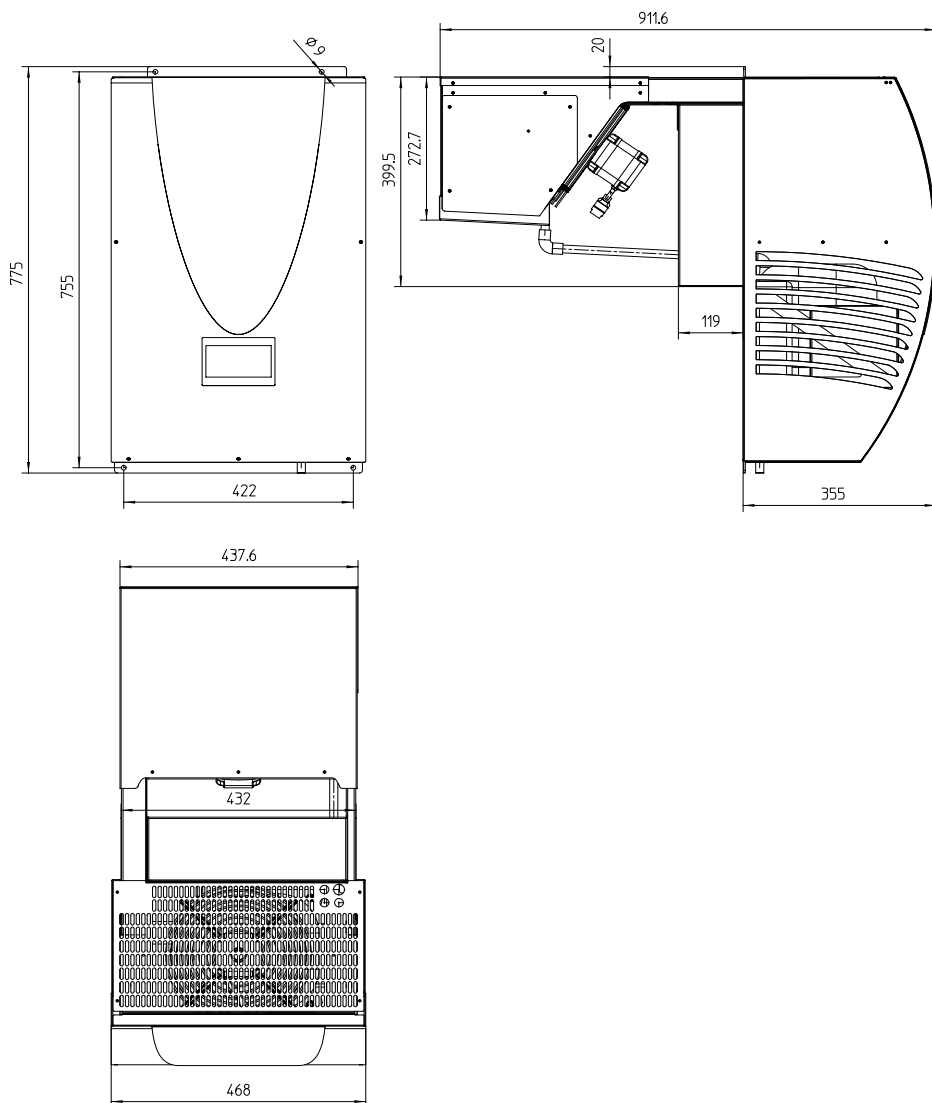


Fig. 2: Dimensions of the 6 WN1, 10 WN1, 5 WL1 and 7 WL1 units

Designation	Unit	6 WN1	10 WN1	5 WL1	7 WL1
Temperature range of cold room	°C	MT +10 / -5		LT -15 / -25	
Max. spatial volume of cold room	m³	6	10	5	7
Power supply	V	1~230			
Frequency	Hz	50			
Refrigeration capacity	W	1026 (at ambient temperature of 32°C and cold room temperature of 2°C)	1590 (at ambient temperature of 32°C and cold room temperature of 2°C)	738 (at ambient temperature of 32°C and cold room temperature of -18°C)	859 (at ambient temperature of 32°C and cold room temperature of -18°C)
Heat output into surrounding area	W	1459	2291	1298	1566
Compressor power consumption	W	433	701	560	707
EER <sub>1</sub> (energy efficiency rating, based on the ratio of power consumption to cooling capacity)	-	2,36	2,27	1,32	1,21
Current consumption (LRA)	A	20,7	28	21	30
Current consumption (FLA)	A	3	5,7	2,4	4
Defrost mode	-	E			
Evaporator-fan airflow	m³/h	750			
Condenser-fan airflow	m³/h	750			
Protection rating	IP	34			
Max. ambient temperature	°C	43		35	
Refrigerant	-	R-513A		R-452A	
GWP (global warming potential)	-	631,4		2140	

Tab. 2: Technical data



Designation		Unit	6 WN1	10 WN1	5 WL1	7 WL1
CO <sub>2</sub> equivalent	t CO <sub>2</sub>		0,189	0,253	0,642	0,856
Refrigerant quantity	g		300	400	300	400
Length of mains cable	m		2			
Evaporator-fan throw distance	m		3,5			
Dimensions	-			See fig. 2: "Dimensions of 6 WN1, 10 WN1, 5 WL1 and 7 WL1" (page 15)		
Weight	kg		60	68		69
Colour	RAL		9010 / 7024			

*Tab. 2: Technical data*

### 3.2 Monoblock units 15 WN2, 20 WN2, 10 WL2 and 15 WL2

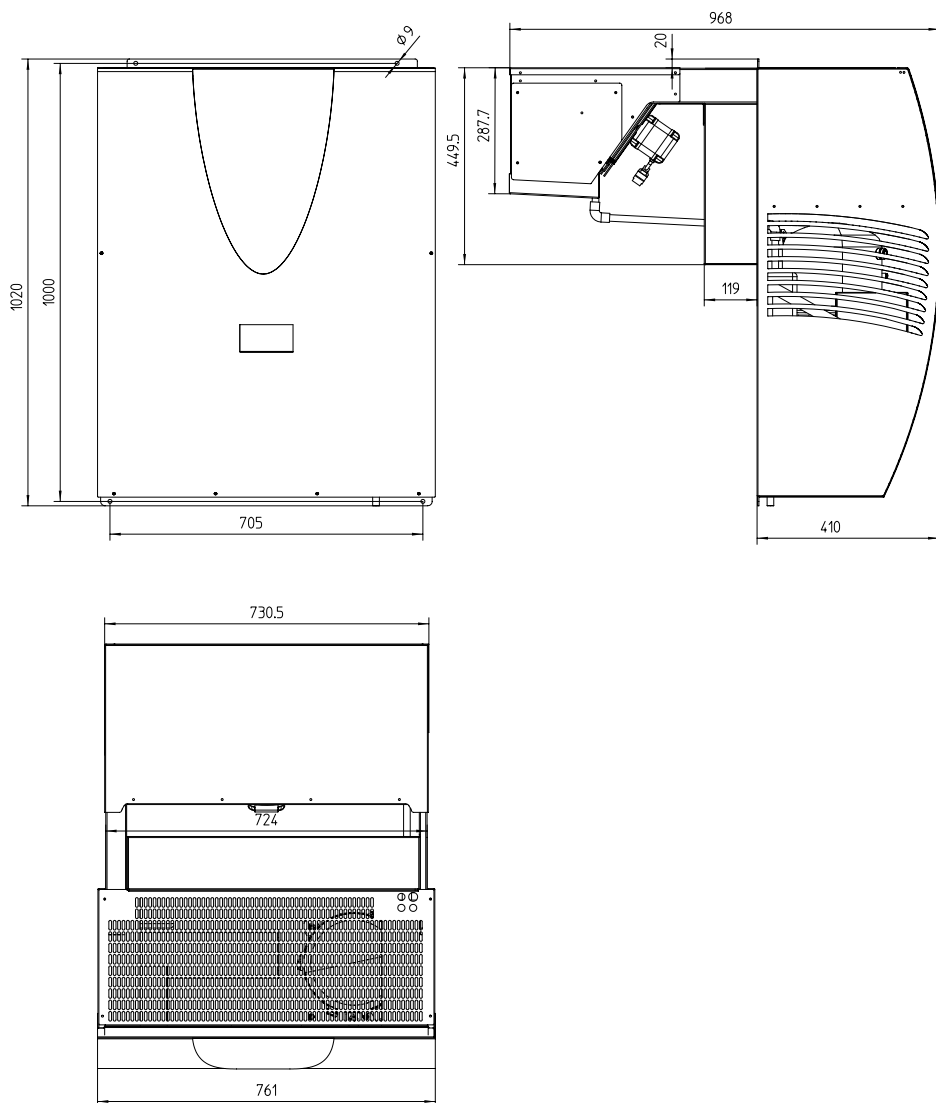


Fig. 3: Dimensions of 15 WN2, 20 WN2, 10 WL2 and 15 WL2

Designation	Unit	15 WN2	20 WN2	10 WL2	15 WL2
Temperature range of cold room	°C	MT +10 / -5		LT -15 / -25	
Max. spatial volume of cold room	m³	15	20	10	15
Power supply	V	1~230	3~400	1~230	3~400
Frequency	Hz	50			
Cooling capacity	W	2079 (at ambient temperature of 32°C and cold room temperature of 2°C)	2560 (at ambient temperature of 32°C and cold room temperature of 2°C)	1133 (at ambient temperature of 32°C and cold room temperature of -18°C)	2111 (at ambient temperature of 32°C and cold room temperature of -18°C)
Heat output into surrounding area	W	2904	3690	1943	3693
Compressor power consumption	W	825	1130	810	1582
EER <sub>1</sub> (energy efficiency rating, based on the ratio of power consumption to cooling capacity)	-	2,52	2,27	1,4	1,33
Current consumption (LRA)	A	30	23	30	23
Current consumption (FLA)	A	5,1	7,5	4	2,8
Defrosting mode	-	Hot gas			
Evaporator-fan airflow	m³/h	1100			
Condenser-fan airflow	m³/h	1100			
Protection rating	IP	34			
Max. ambient temperature	°C	43		35	
Refrigerant	-	R-513A		R-452A	

Tab. 3: Technical data

Designation	Unit	15 WN2	20 WN2	10 WL2	15 WL2
GWP (global warming potential)	-	631,4		2140	
CO <sub>2</sub> equivalent	t CO <sub>2</sub>	0,474	0,505	1,605	1,712
Refrigerant quantity	g	750	800	750	800
Length of mains cable	m	2			
Evaporator-fan throw distance	m	6			
Dimensions	-	See fig. 3: Dimensions of 15 WN2, 20 WN2, 10 WL2 and 15 WL2" (page 18)			
Weight	kg	104	106	100	112
Colour	RAL	9010 / 7024			
Tab. 3: Technical data					

### 3.3 Monoblock units 40 WN3 and 20 WL3

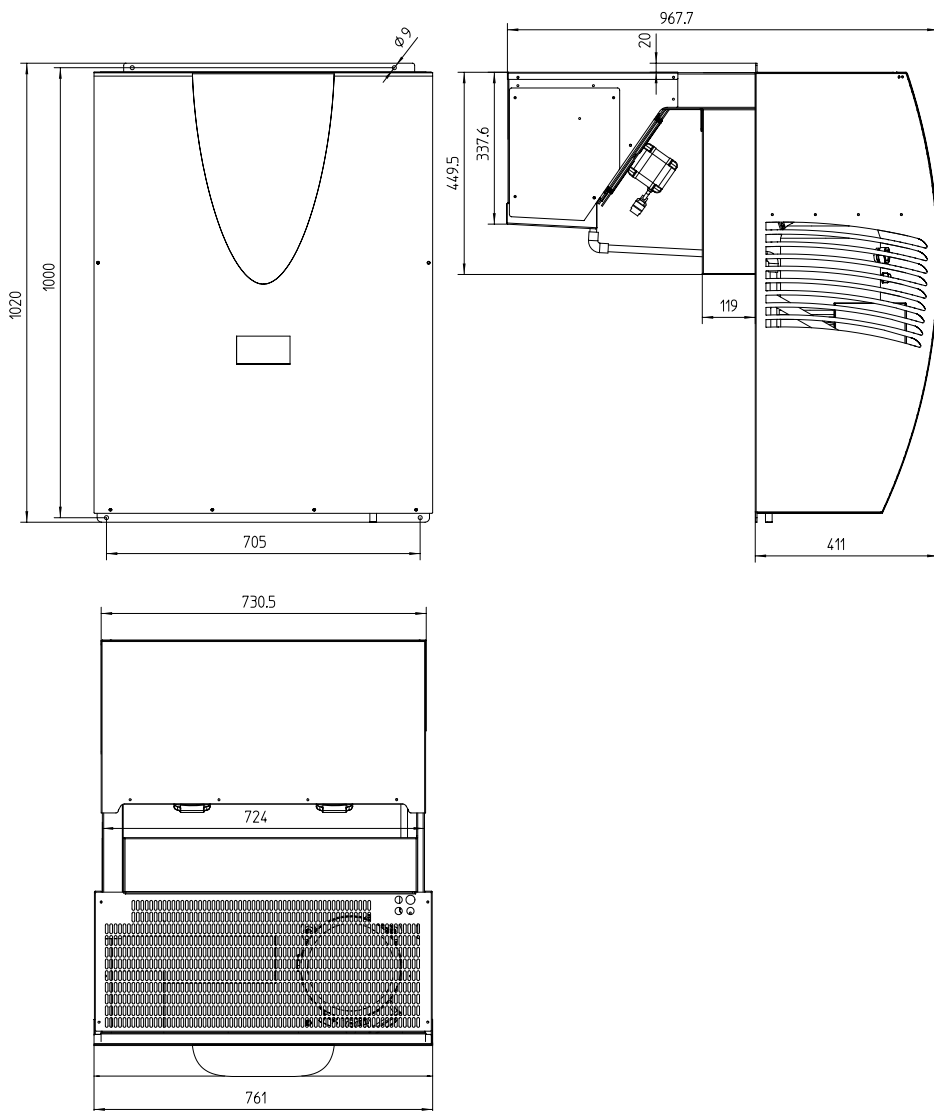


Fig. 4: Dimensions of 40 WN3 and 20 WL3

Designation	Unit	40 WN3	20 WL3
Temperature range of cold room	°C	MT+10 / -5	LT -15 / -25
Max. spatial volume of cold room	m³	40	20
Power supply	V	3~400	
Frequency	Hz	50	
Cooling capacity	W	4370 (at ambient temperature of 32°C and cold room temperature of 2°C)	2670 (at ambient temperature of 32°C and cold room temperature of -18°C)
Heat output into surrounding area	W	6120	4720
Compressor power consumption	W	1750	2050
EER <sub>1</sub> (energy efficiency rating, based on the ratio of power consumption to cooling capacity)	-	2,5	1,3
Current consumption (LRA)	A	38	
Current consumption (FLA)	A	10	
Defrosting mode	-	Hot gas	
Evaporator-fan airflow	m³/h	2 x 1100	
Condenser-fan airflow	m³/h	2 x 1100	
Protection rating	IP	34	
Max. ambient temperature	°C	43	35
Refrigerant	-	R-513A	R-452A
GWP (global warming potential)	-	631,4	2140

Tab. 4: Technical data

Designation	Unit	40 WN3	20 WL3
CO <sub>2</sub> equivalent	t CO <sub>2</sub>	1,01	3,745
Refrigerant quantity	g	1600	1750
Length of mains cable	m	2	
Evaporator-fan throw distance	m	8	
Dimensions	-	See fig. 4: “Dimensions of 40 WN3 and 20 WL3” (page 21)	
Weight	kg	105	106
Colour	RAL	9010 / 724	
Tab. 4: Technical data			

## 4 Packing, transport and storage

The monoblock unit is secured in a pallet-mounted packing case for safe transportation.



### **CAUTION**

**Refrigerant leaks from damaged equipment can cause skin injuries and material damage.**

**In the event of severe external damage to the packing material and/or the monoblock unit itself, contact your local GOVI representative immediately.**

**DO NOT try to install the monoblock unit.**

**DO NOT attempt to start it up.**

1. Place the pallet on a flat surface. Examine the packing material and monoblock unit for transport damage.
2. Inform the carrier of any damage detected.
3. Take photographs of the damage, and add a corresponding note to the transport documents.
4. Check accompanying items for completeness.
5. Before disposing of the packing material, check for loose items forming part of the delivery.



## 4.1 Transport



### CAUTION

**Risk of equipment damage**

**The monoblock unit must be transported in an upright position.**

**Leave the monoblock unit standing upright for at least six hours before starting it up for the first time.**

- Use only suitable lifting gear and transport equipment to raise and move the monoblock unit. For details of its weight, see “**3 Technical data**” (page **14**).
- Lift the monoblock unit as described in “**6 Installation**” (page **29**).

## 4.2 Storage

Please observe the following points when placing the monoblock unit into storage:

- The monoblock unit must be placed in a horizontal position for storage.
- The storage location must be dry and dust-free.
- The storage temperature must not exceed **60°C**.
- DO NOT store the monoblock unit near corrosive substances of any kind.
- Use a storage location away from direct sunlight.

## 5 System description

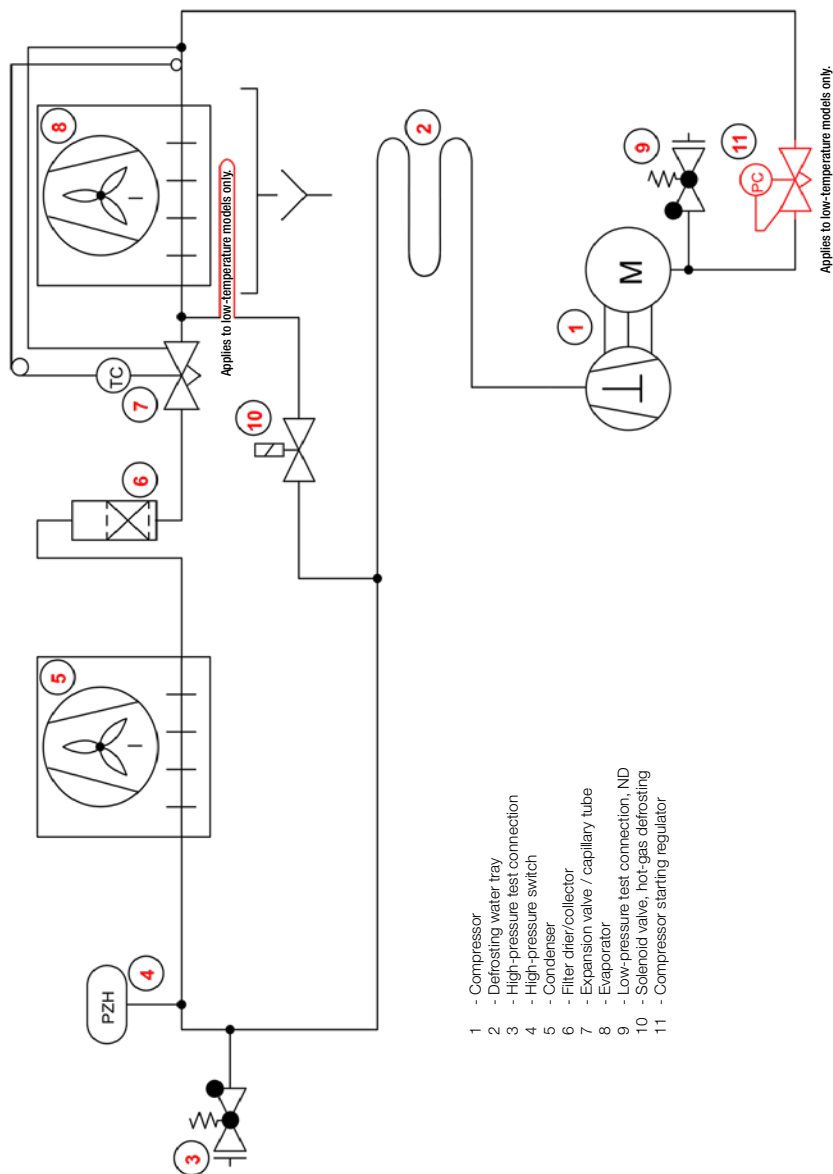


Fig. 5: Flowchart

The compressor **1** draws the gaseous vaporised refrigerant from the evaporator **8** and compresses it.

This makes the refrigerant temperature rise abruptly.

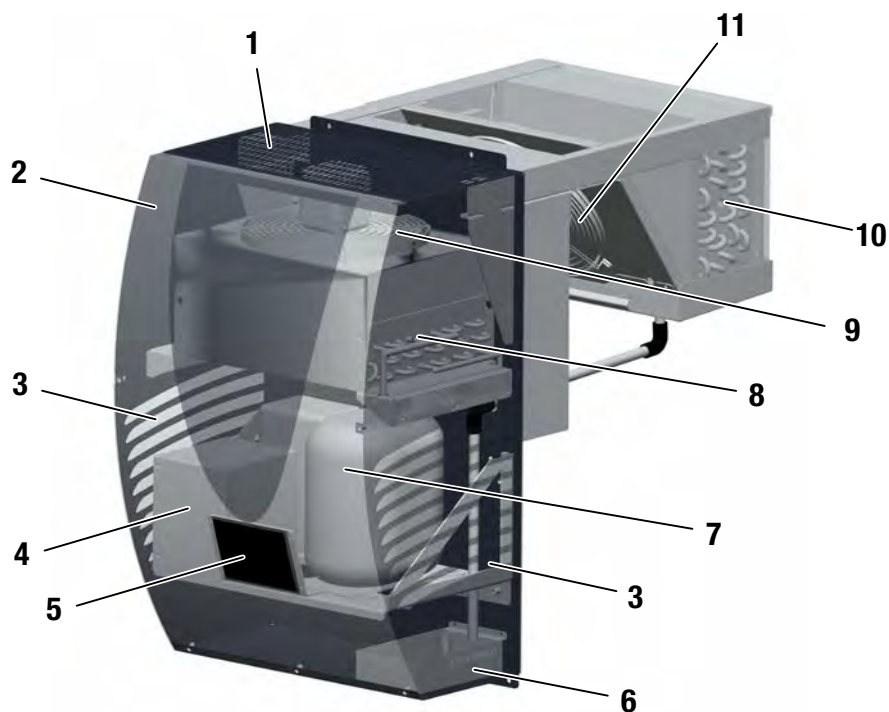
The vaporised refrigerant is transported from the compressor **1** to the condenser **5**.

In the condenser **5**, the refrigerant gas is cooled by ambient air, causing it to liquefy.

The heat removed from the cold room is then released into the atmosphere. The liquid refrigerant is then collected in the drier/collector **6** and stripped of moisture and impurities.

The throttle valve **7** regulates the flow quantity of liquid refrigerant for the evaporator **8**.

The evaporator **8** is inside the cold room, with the condenser **5** outside.



- |                         |                          |                          |
|-------------------------|--------------------------|--------------------------|
| <b>1</b> Air outlet     | <b>5</b> Control unit    | <b>9</b> Condenser fan   |
| <b>2</b> Main cover     | <b>6</b> Condensate tray | <b>10</b> Evaporator     |
| <b>3</b> Air intake     | <b>7</b> Compressor      | <b>11</b> Evaporator fan |
| <b>4</b> Control system | <b>8</b> Condenser       |                          |

*Fig. 6: Overview of the monoblock unit*

The main cover **2** covers the components outside the cold room. These include the control unit, the compressor, the condenser and the condenser fan, along with the condensate tray.

The evaporator **5** of the monoblock unit is inside the cold room.



Keep the air intakes **3** and outlet **1** clear at all times. They must not be covered or obstructed.

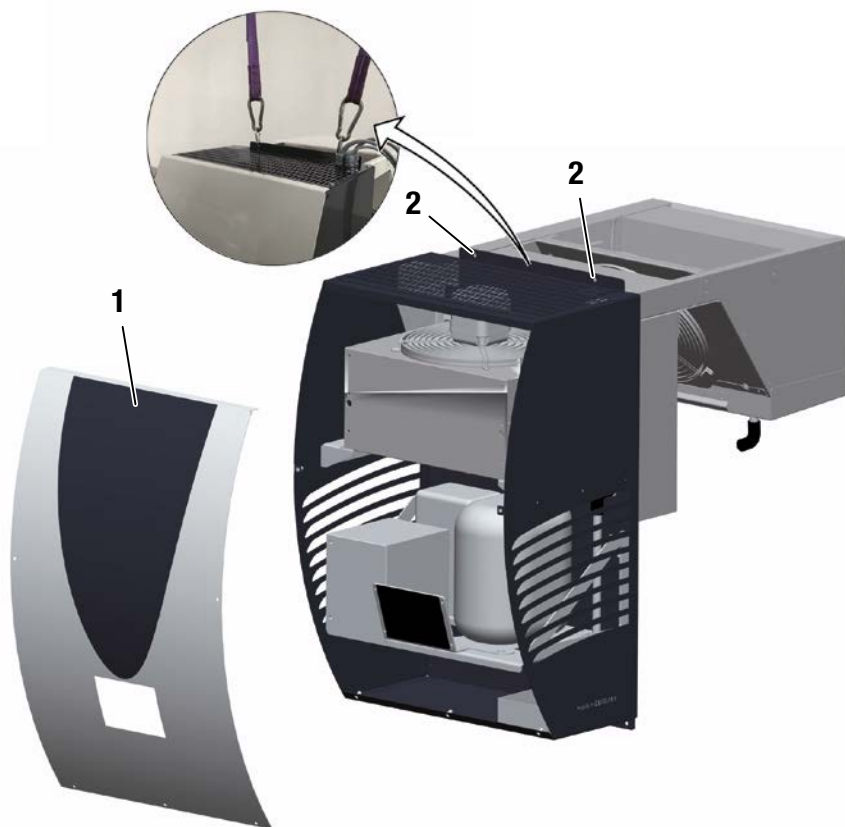
## **6 Installation**

### **6.1 Installation requirements**

1. Read through the operating manual carefully in order to carry out installation correctly.
2. Verify that the monoblock unit has been delivered according to your order specifications, and that it is in good condition with no visible signs of damage.
3. Check to ensure that none of the necessary tools and additional items are missing, and that they are in proper operating condition.
4. Ensure also that the supporting elements of the monoblock unit are strong enough to support its weight.
5. Ensure that the crane hoist and lifting gear are of the right size to support the load of the monoblock unit. For details of its weight, [see section 3 "Technical data" \(page 14\)](#).
6. NB: Do not connect the power supply of the monoblock unit before first completing the installation of the unit and its accessories.
7. Do not allow the inside walls of the cold room to be soiled or damaged by the swarf and other fragments that result from cutting and drilling of the sheet metal.

## 6.2 Installation of the units

### 6.1.1 General preparation



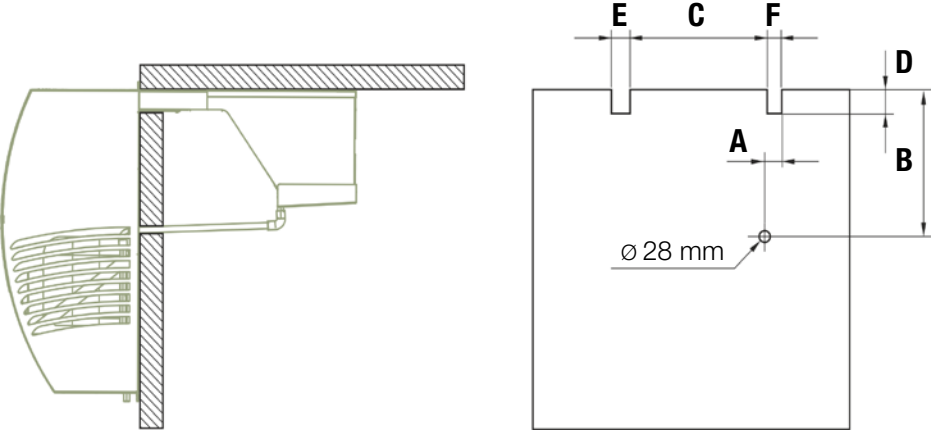
**1** Main cover      **2** Lifting ring

*Fig. 7: Installation, preparation*

1. Place the cold room and monoblock unit on a dry, clean level surface.

- 2. Make sure that the cold room is level.
- 3. Ensure that the mating surface between the cold room wall and monoblock unit is level and free of impurities.
- 4. Remove all loose items from the installation area.
- 5. Prepare all the required installation tools and other equipment and keep them to hand.
- 6. Undo the five screws and remove the main cover **1**.
- 7. Keep the monoblock unit upright at all times during installation, including lifting operations.
- 8. Attach suitable lifting gear at the lifting rings **2**.

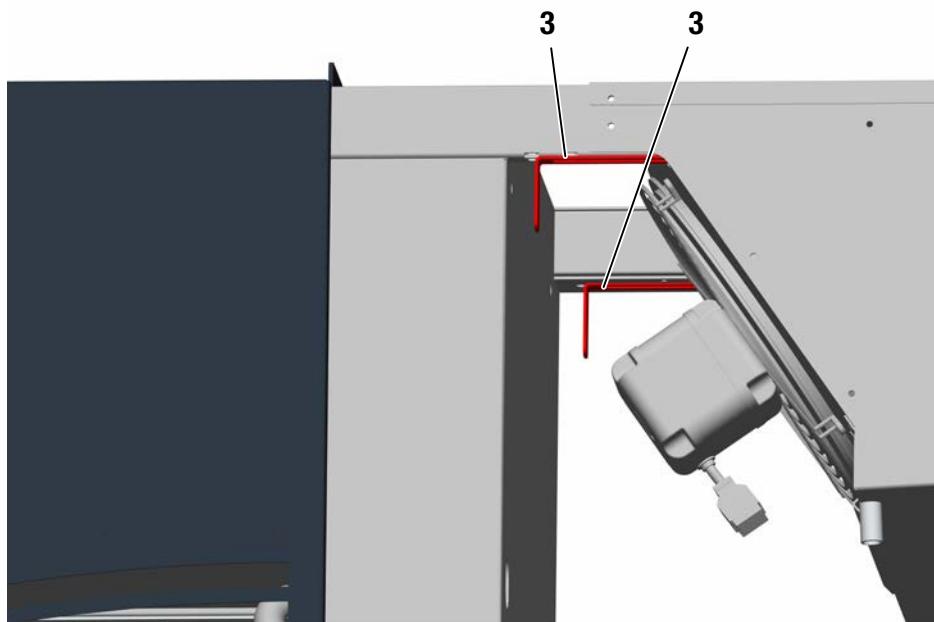
6.1.2 Hanging installation of the unit (removable top)



Model	A	B	C	D	E	F
WN1 / WL1	41 mm	364 mm	362 mm	75 mm	54 mm	21 mm
WN2 / WL2		378 mm	655 mm	105 mm		
WN3 / WL3		430 mm				

Fig. 8: Installation with wall cutout for fitting of unit

1. Remove the top of the cold room.
2. Carry out preparatory work as described in [6.1.1 "General preparation"](#) (page [30](#)).
3. Make the corresponding cutouts in the cold room wall. See [fig. 9: "Installation with wall cutout for fitting of unit"](#) (page [31](#)).



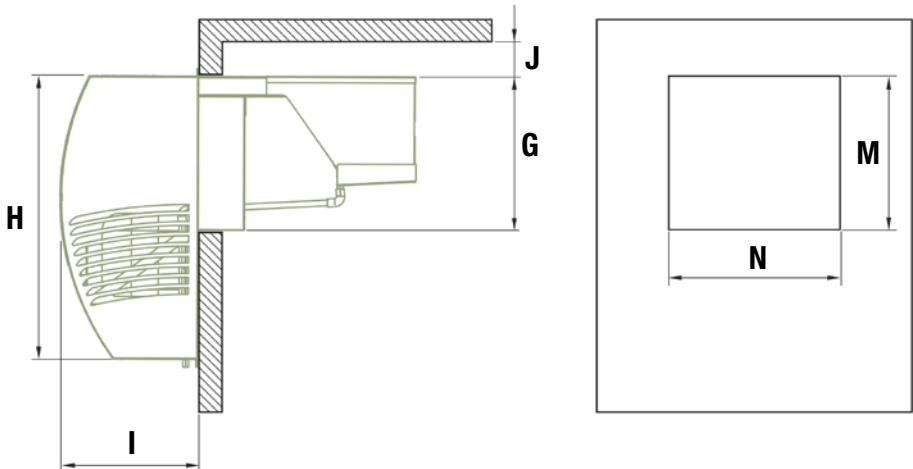
**3** Angle bracket

*Fig. 9: Installation with suspended attachment of unit*

4. Use a hoist and lifting gear to position the monoblock unit in the cutouts in the cold room wall.
5. Slide the two brackets **3** onto the cold room wall on either side of the monoblock unit. Tighten both pairs of screws.
6. Detach the lifting gear.



- 7. Seal the cold room by applying silicone sealant to the gap between the monoblock unit and cold room.
- 8. Carry out final tasks as described in 6.1.4 “Final tasks” (page 35).

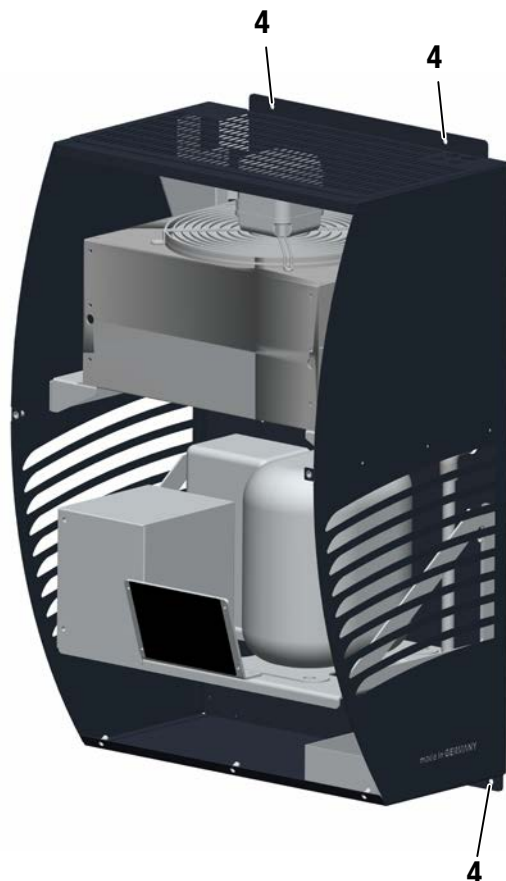


Model	G	H	I	J	M	N
WN1 / WL1	438 mm	755 mm	355 mm	100 mm	405 mm	443 mm
WN2 / WL2	731 mm	1020 mm	410 mm		455 mm	736 mm
WN3 / WL3						

Fig. 10: Embedded installation by insertion of unit into opening

6.1.3 Embedded installation of the unit (installation opening)

- 1. Make the corresponding cutouts in the cold room wall. See fig. 10 “Embedded installation by insertion of unit into opening” (page 33).
- 2. Use a hoist and lifting gear to position the monoblock unit in the installation opening in the cold room wall.

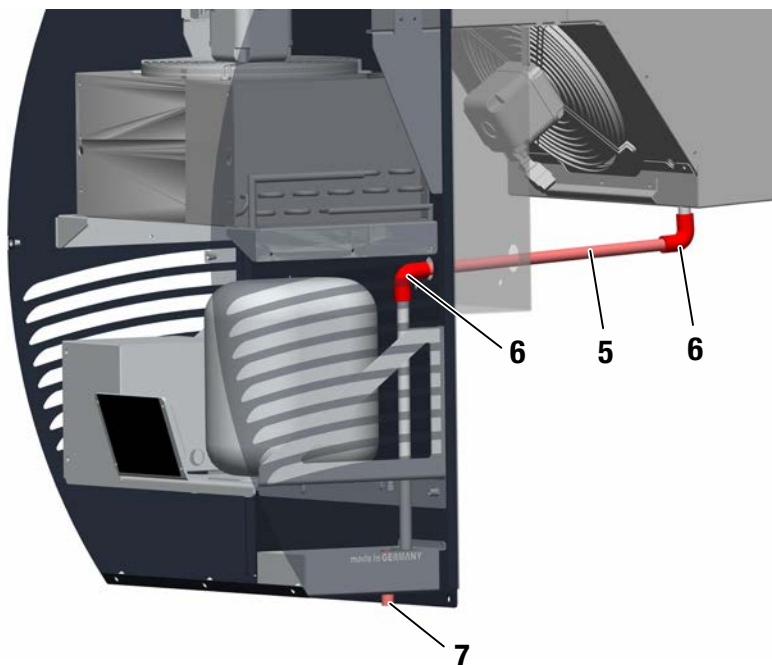


**4** Fixing holes

*Fig. 11: Installation, fitting the through-the-wall kit*

3. Secure the monoblock unit to the cold room by means of suitable screws inserted into the four mounting holes **4**.
4. Detach the lifting gear.
5. Carry out final tasks as described in **6.1.4** "Final tasks" (page **35**).

#### 6.1.4 Final tasks



- 5** Drain pipe      **7** Overflow pipe  
**6** Corner-piece

*Fig. 12: Installation, mounting and drainage*

1. Feed the drain pipe **5** through the hole in the monoblock unit and connect it to the corner-pieces **6**.
2. Seal the cold room by applying silicone sealant to the gap between the monoblock unit and cold room.
3. Connect the condensed water drain hose to the overflow pipe **7**.
4. Connect the compact air-conditioning unit and the cold room lamp to the power supply as shown in the wiring diagram.
5. Secure the main cover **3** with five screws.
6. Carry out function testing.

## **6.3 Installation of accessories**

As an option, a lamp inside the cold room can be connected to the monoblock unit and operated from it.

It is not necessary to open the unit when installing the lighting system. The power supply connection has been prefitted at the factory.

The interior-lighting connection cable is on the side panel of the evaporator.

## 7 Operating elements







*Fig. 13: Control panel*

The following functions can be displayed or called up via the control panel:

- Monoblock unit on/off function
- Display and selection of nominal temperature
- Cold room lamp on/off function
- Defrost function







The control panel consists of the LED display and function keys.

## 7.1 LED Indicator

Symbol	Name	Operation	Meaning
	Compressor	Permanently on	■ Compressor is activated.
		Flashing	■ The compressor is switched on and in its startup phase.
	Defrosting	Permanently on	■ Defrost function is active.
		Flashing	
	Fan	Permanently on	■ Fan is on.
	Alarm	Permanently on	■ Error message present
		Flashing	■ Error message has been acknowledged.
AUX	AUX		

*Tab. 5: LED indicator*

## 7.2 Function keys

Symbol	Press briefly	Press and hold (> 5 s)
	<ul style="list-style-type: none"> <li>■ Cancellation of selected function</li> </ul>	<ul style="list-style-type: none"> <li>■ Activation of the reduced-set-point function</li> </ul>
	<ul style="list-style-type: none"> <li>■ Display of current error messages</li> <li>■ Access to Machine Status menu</li> <li>■ Confirmation of commands</li> </ul>	<ul style="list-style-type: none"> <li>■ Access to Programming menu (password-protected)</li> </ul>
	<ul style="list-style-type: none"> <li>■ Switch device on/off</li> </ul>	
	<ul style="list-style-type: none"> <li>■ Scroll through menu options</li> <li>■ Increase settings</li> </ul>	<ul style="list-style-type: none"> <li>■ Activation of manual defrost function</li> </ul>
	<ul style="list-style-type: none"> <li>■ Scroll through menu options</li> <li>■ Reduced settings</li> </ul>	
	<ul style="list-style-type: none"> <li>■ Switch cold room lamp on/off</li> </ul>	

*Tab. 6: Function keys*

## 8 Commissioning

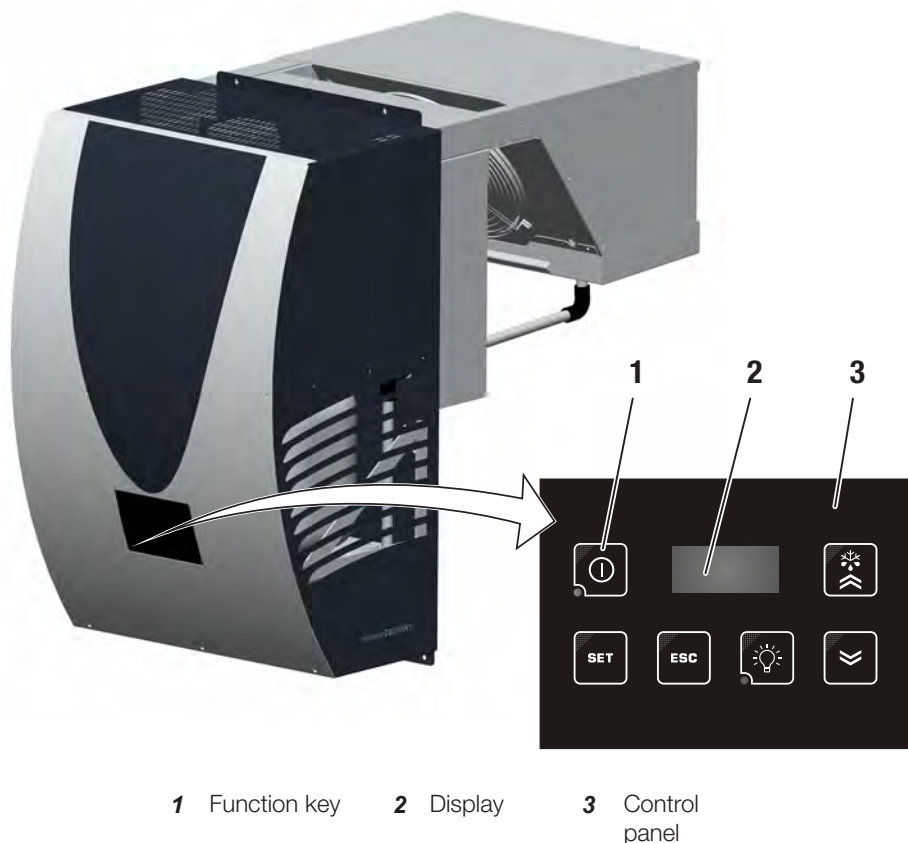


Fig. 14: Commissioning



### CAUTION

Switch the monoblock unit off immediately if you detect smoke or unusual smells or noises coming from the unit.

Contact GOVI Customer Service before restarting.





1. Switch on the monoblock unit.
  - a. Press function key **1**. The LED of function key **1** lights up to indicate that operating voltage is present.



- b. The compressor is started. The corresponding symbol on the display **2** flashes until the compressor is ready for operation.
  - c. The display **2** shows the nominal temperature.
2. Release the key lock, [see section 9.2 “Unlocking the function keys” \(page 43\)](#).
3. Set the nominal temperature, [see section 9.3 “Setting the nominal temperature” \(page 43\)](#).
4. Make sure that:
  - a. the installation opening and drill holes in the cold room wall are airtight,
  - b. the air intakes and outlets on the condenser and evaporator are not obstructed or blocked,
  - c. the main cover is securely fitted and screwed on,
  - d. the condensation water drain hose is properly connected to the overflow pipe,
  - e. all screws are securely fastened and
  - f. the system is operating correctly.

## 9 Operation



### CAUTION

Switch the monoblock unit off immediately if you detect smoke or unusual smells or noises coming from the unit.

Contact GOVI Customer Service before restarting.

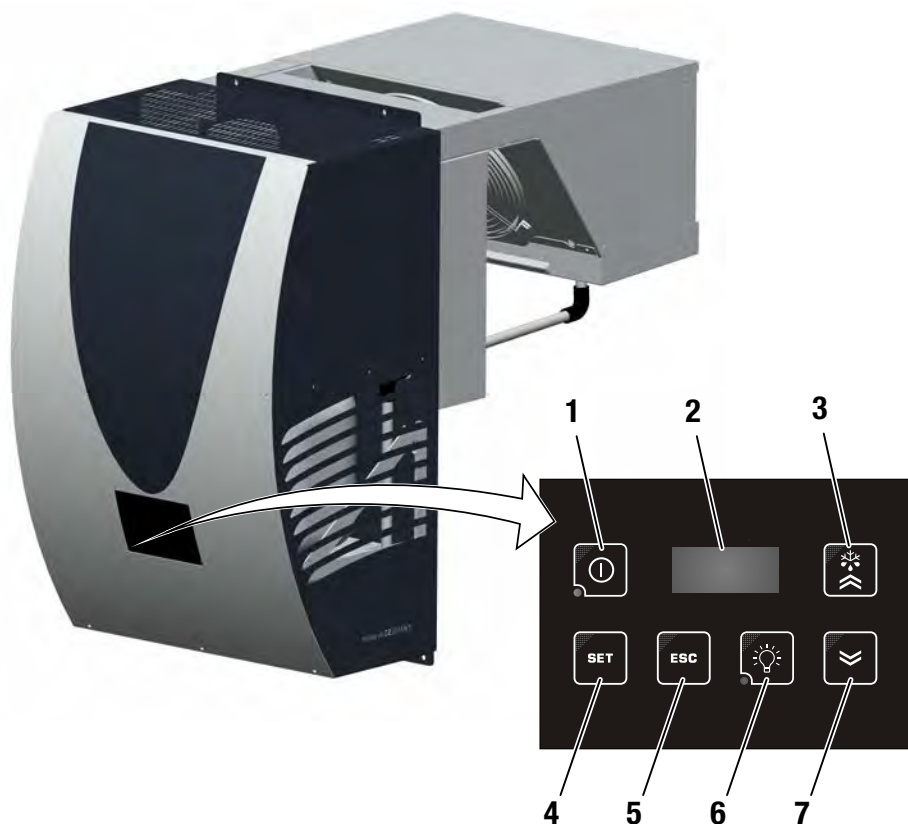


Fig. 15: Control panel

## 9.1 Switching the monoblock unit on and off



1. To switch on, press function key **1** until the key LED lights up.
2. To switch off, press function key **1** until the key LED goes out.

## 9.2 Unlocking the function keys

Push any function key on the control panel, and keep it pressed for more than **5** seconds.

## 9.3 Setting the nominal temperature

The monoblock unit must be switched on and the key-lock function disabled.



1. Briefly press function key **4**. "Set" will appear on display **2**
2. Press function key **4** again. The current nominal temperature will appear on display **2**.



3. To increase the nominal temperature, press function key **3**; to reduce it, press function key **7**. Each press of the button changes the nominal-temperature setting by **0.1°C**. To speed up the rate of change, keep function key **3** or **4**. This function has a slight delay



4. When the desired setting is reached, press function key **4** again to store the displayed value as a setpoint. The display **2** will now show the current temperature in the cold room.



## 9.4 Switching the lamp on and off

The monoblock unit must be switched on and the key-lock function disabled.



1. To switch on, press function key 6 until the key LED lights up
2. To switch off, press function key **6** until the key LED goes out.

## 9.5 Carrying out a manual defrost

The monoblock unit must be switched on and the key-lock function disabled.



1. Press and hold function key 3 for more than 5 seconds, or until a signal sounds. Manual defrosting is now started.

## 10 Maintenance



### Monoblock unit

- Carry out maintenance every six months, or
- after a long period of time without operation, or
- after operation in a dusty or damp environment.

Failure to carry out proper maintenance can lead to malfunctioning of, and damage to, the monoblock unit.

## 10.1 Cleaning

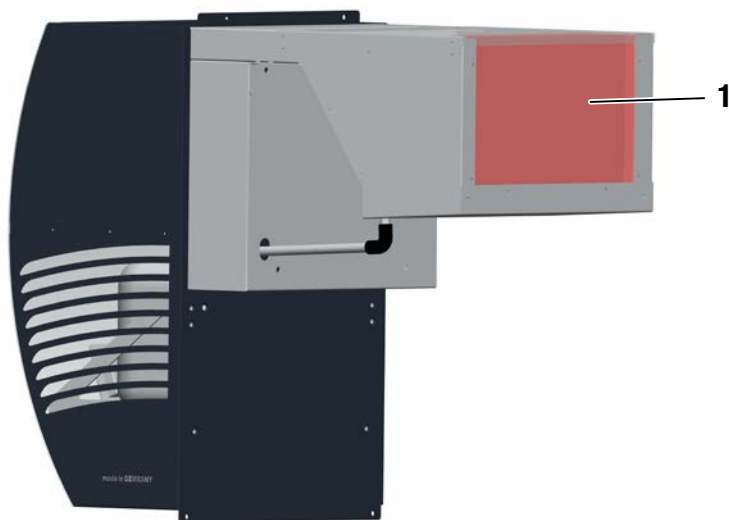
### 10.1.1 Cleaning of components inside the cold room



#### **WARNING**

**Danger of fire and explosion.**

**DO NOT use flammable solvents such as alcohol, benzene or thinners for cleaning.**

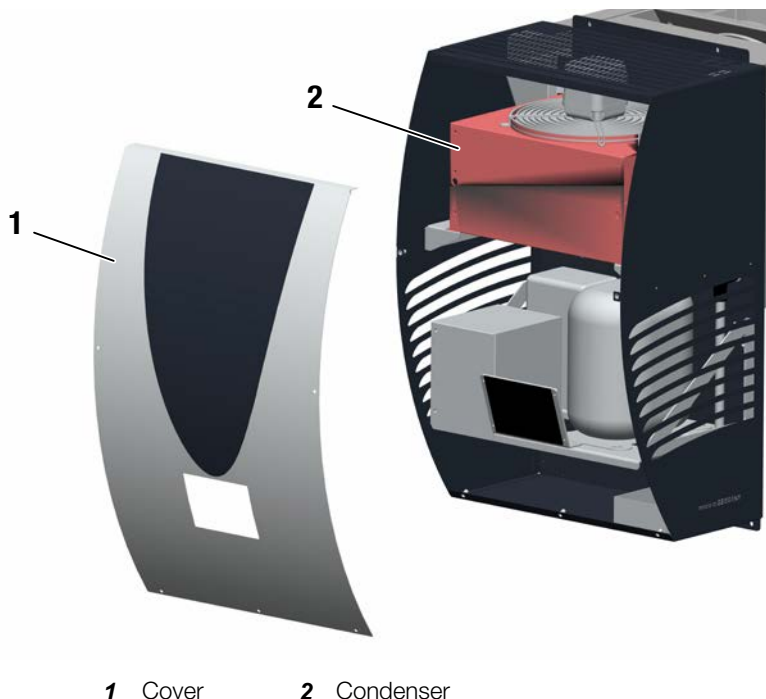


**1** Evaporator

*Fig. 16: Cleaning of components  
inside the cold room*

1. Disconnect the monoblock unit from the power supply and secure it to prevent accidental reactivation.
2. Use compressed air to clean the evaporator **1**.
3. Reconnect the power supply and carry out function testing of the compact air conditioner.

### 10.1.2 Cleaning of external components



**1** Cover      **2** Condenser

*Fig. 17: Cleaning of external components*

1. Disconnect the monoblock unit from the power supply and secure it to prevent accidental reactivation.
2. Undo the five screws and remove the main cover **1**.
3. Clean the condenser **2** by blowing in compressed air through the cooling fins, working from top to bottom.
4. You may have to realign the fins on the condenser **2** after cleaning.
5. Secure the main cover **1** with five screws
6. Reconnect the power supply and carry out function testing of the compact air conditioner.

## 11 Faults

### 11.1 Troubleshooting

Error or fault	Cause	Remedy
Monoblock unit does not cool sufficiently.	Surrounding temperature too high.	<ul style="list-style-type: none"> <li>■ Check the cold room for leaks.</li> <li>■ Ensure adequate ventilation and air circulation in the surrounding area.</li> </ul>
	Leaking refrigerant.	<ul style="list-style-type: none"> <li>■ Contact GOVI Customer Service.</li> </ul>
	Condenser is blocked.	<ul style="list-style-type: none"> <li>■ Clean the condenser, <a href="#">see section 10.1.2 “Cleaning of external components” (page 47)</a>.</li> </ul>
	Fans not working.	<ul style="list-style-type: none"> <li>■ Contact GOVI Customer Service.</li> </ul>
	Air circulation blocked on the outside (condenser area) of the monoblock unit.	<ul style="list-style-type: none"> <li>■ Ensure that there is sufficient space between the monoblock unit and adjacent items.</li> <li>■ Remove all loose obstacles likely to obstruct air circulation.</li> </ul>
	Insufficient air circulation inside the cold room.	<ul style="list-style-type: none"> <li>■ Check the positioning of items in the cold room.</li> <li>■ Position items in such a way that they do not impede air circulation.</li> </ul>
The monoblock unit switches itself on and off automatically.	No nominal-temperature setting.	<ul style="list-style-type: none"> <li>■ Set the nominal temperature, <a href="#">see section 9.3 “Setting the nominal temperature” (page 43)</a>.</li> </ul>
	Temperature sensor is defective.	<ul style="list-style-type: none"> <li>■ Contact GOVI Customer Service.</li> </ul>

*Tab. 7: Troubleshooting*



Error or fault	Cause	Remedy
	High-pressure switch is triggered.	<ul style="list-style-type: none"> <li>■ Contact GOVI Customer Service.</li> </ul>
Water dripping from monoblock unit.	Drain hose blocked.	<ul style="list-style-type: none"> <li>■ Blow out drain hose with compressed air to remove impurities.</li> </ul>
Ice build-up on evaporator.	Cold room door is open.	<ul style="list-style-type: none"> <li>■ Close cold room door.</li> </ul>
	Evaporator fan defective.	<ul style="list-style-type: none"> <li>■ Contact GOVI Customer Service.</li> </ul>
	Automatic defrost not working.	<ul style="list-style-type: none"> <li>■ Contact GOVI Customer Service.</li> </ul>
Cold room lamp not working.	No power supply.	<ul style="list-style-type: none"> <li>■ Ensure that the monoblock unit is switched on, <a href="#">see section 9.1 "Switching the monoblock unit on and off" (page 43)</a>.</li> <li>■ Ensure that the lamp is switched on, <a href="#">see section 9.4 "Turning the lamp on and off" (page 44)</a>.</li> <li>■ Check functioning of cold room lamp.</li> <li>■ Check lamp wiring.</li> <li>■ Contact GOVI Customer Service.</li> </ul>
Tab. 7: Troubleshooting		

## 11.2 Error codes

Error Code	Cause	Remedy
E1	Defective temperature sensor in cooling cell.	■ Contact GOVI Customer Service.
E2	Defective defrost-temperature sensor.	■ Contact GOVI Customer Service.
AH1	Alarm: Temperature too high.	■ Contact GOVI Customer Service.
AL1	Alarm: Temperature too low.	■ Contact GOVI Customer Service.
HPA	High-pressure switch triggered.	■ Contact GOVI Customer Service.

*Tab. 8: Error codes*

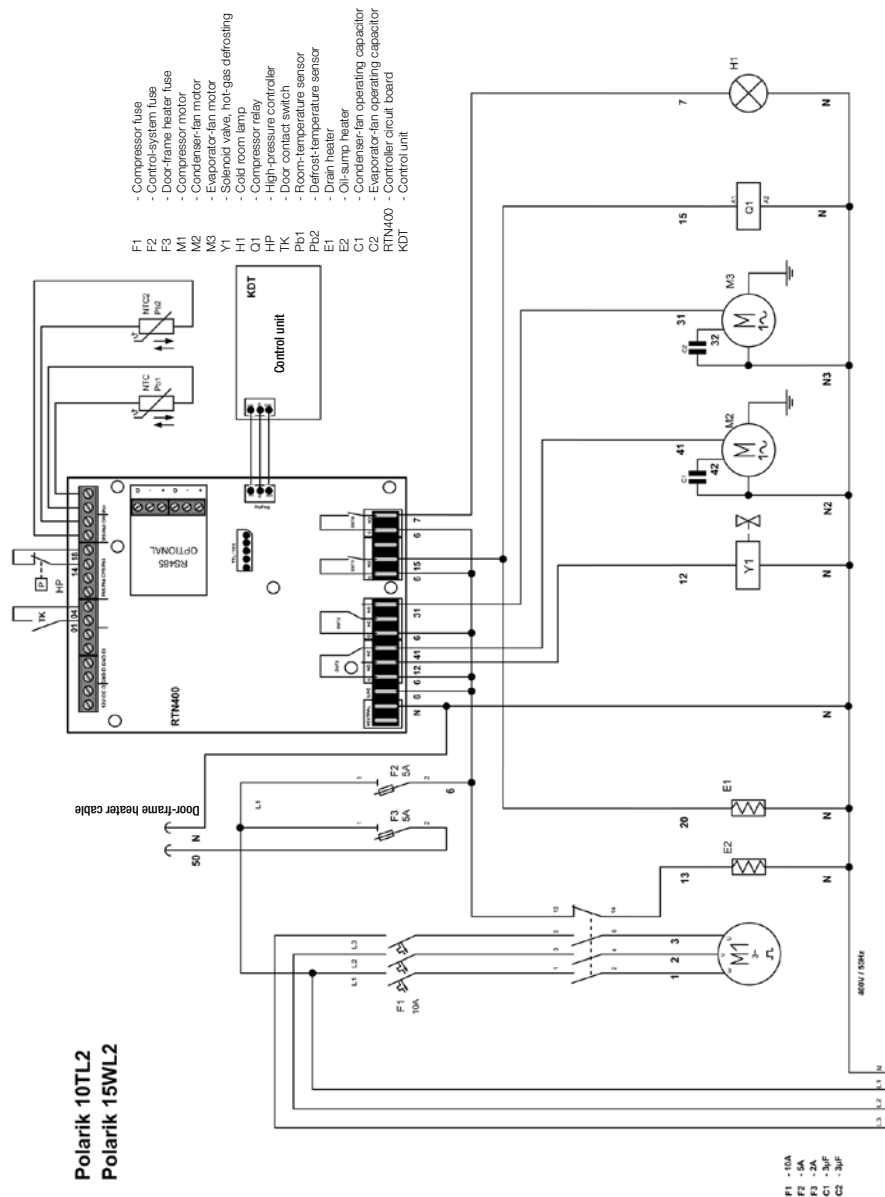
## 12 Appendix

### 12.1 Wiring diagrams



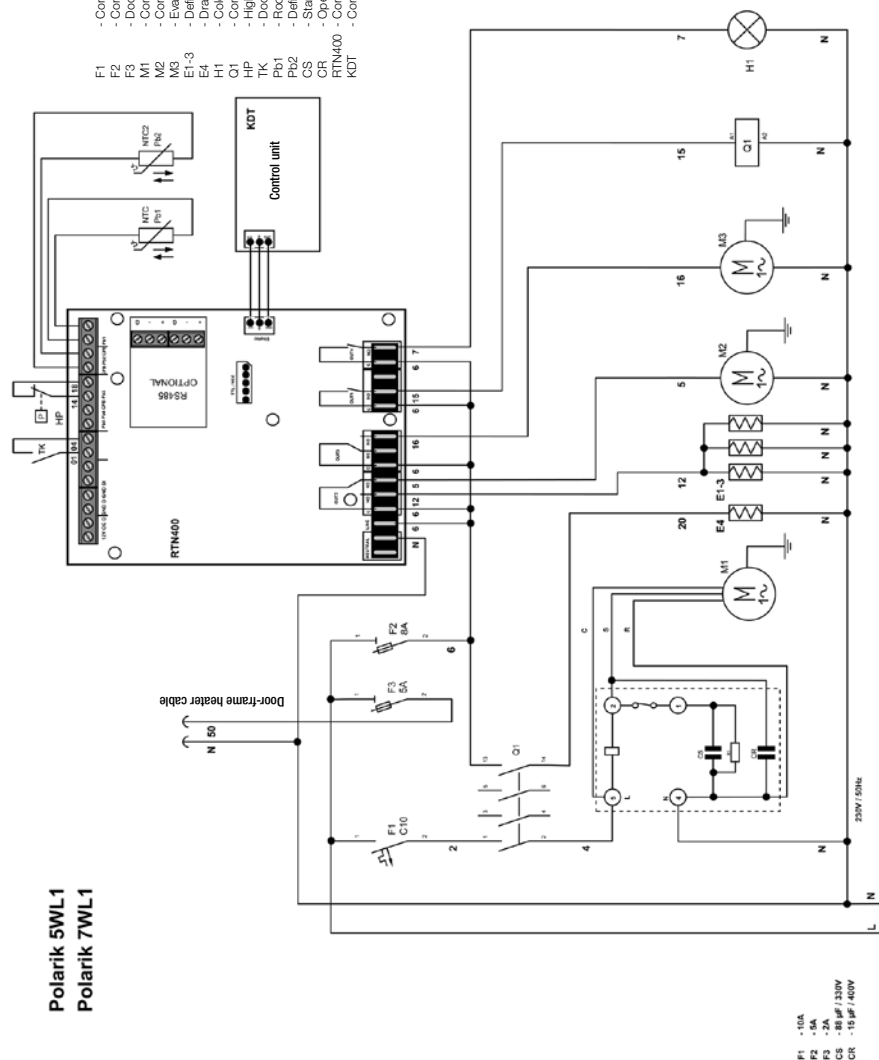
The corresponding wiring diagram is also attached to the device, on the inside of the cover.

**Polarik 10TL2**  
**Polarik 15WL2**



**Polarik 5WL1**  
**Polarik 7WL1**

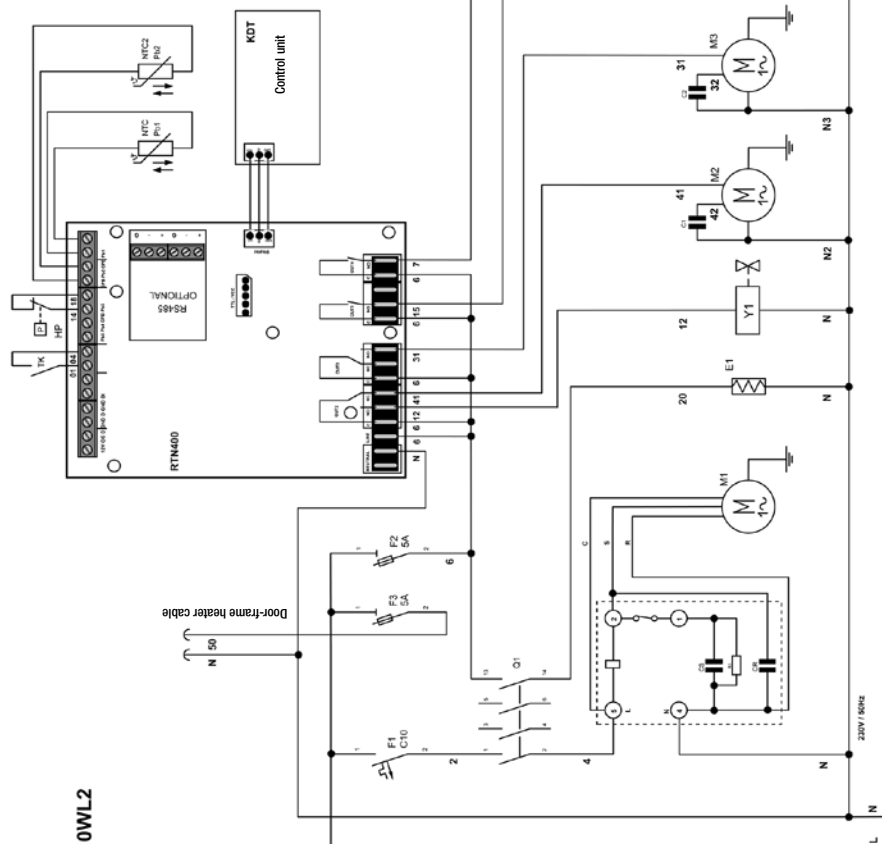
- Compressor fuse
- Control-system fuse
- Door-frame heater fuse
- Compressor motor
- Condenser-fan motor
- Evaporator-fan motor
- Defrost heaters
- Drain heater
- Cold room lamp
- Compressor relay
- High-pressure controller
- Door-contact switch
- Temperature sensor
- Defrost-temperature sensor
- Start capacitor
- Operating capacitor
- RTN400
- Controller circuit board
- KDT



# Polarik 10WL2

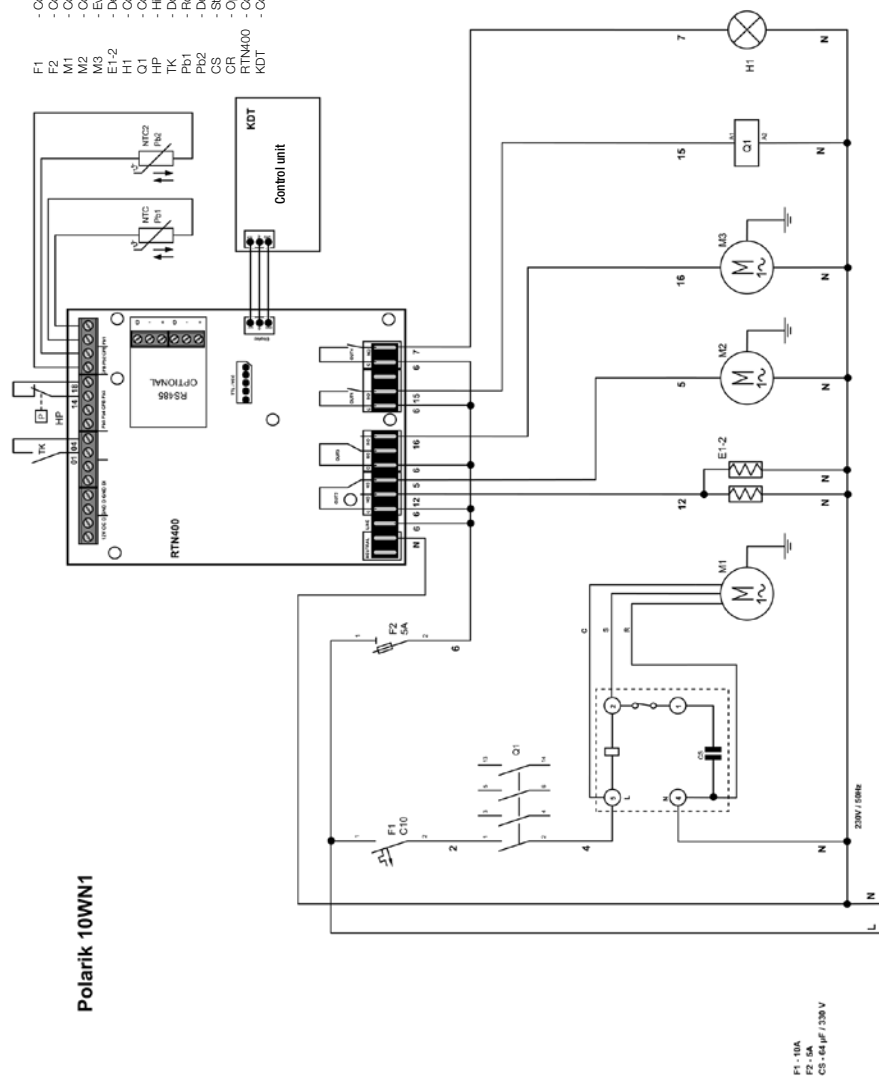
- Compressor fuse
- Control-system fuse
- Door-frame heater fuse
- Compressor motor
- Condenser-fan motor
- Evaporator-fan motor
- Solenoid valve, hot-gas defrosting
- Cold room lamp
- Compressor relay
- High-pressure controller
- Door contact switch
- Room-temperature sensor
- Door-temperature sensor
- Start capacitor
- Operating capacitor
- Condenser-fan operating capacitor
- Evaporator-fan operating capacitor
- RTN400
- Control unit

F1  
F2  
F3  
M1  
M2  
M3  
Y1  
H1  
HP  
TK  
PT1  
PT2  
E1  
CS  
CR  
C1  
C2  
RTN400  
KDT

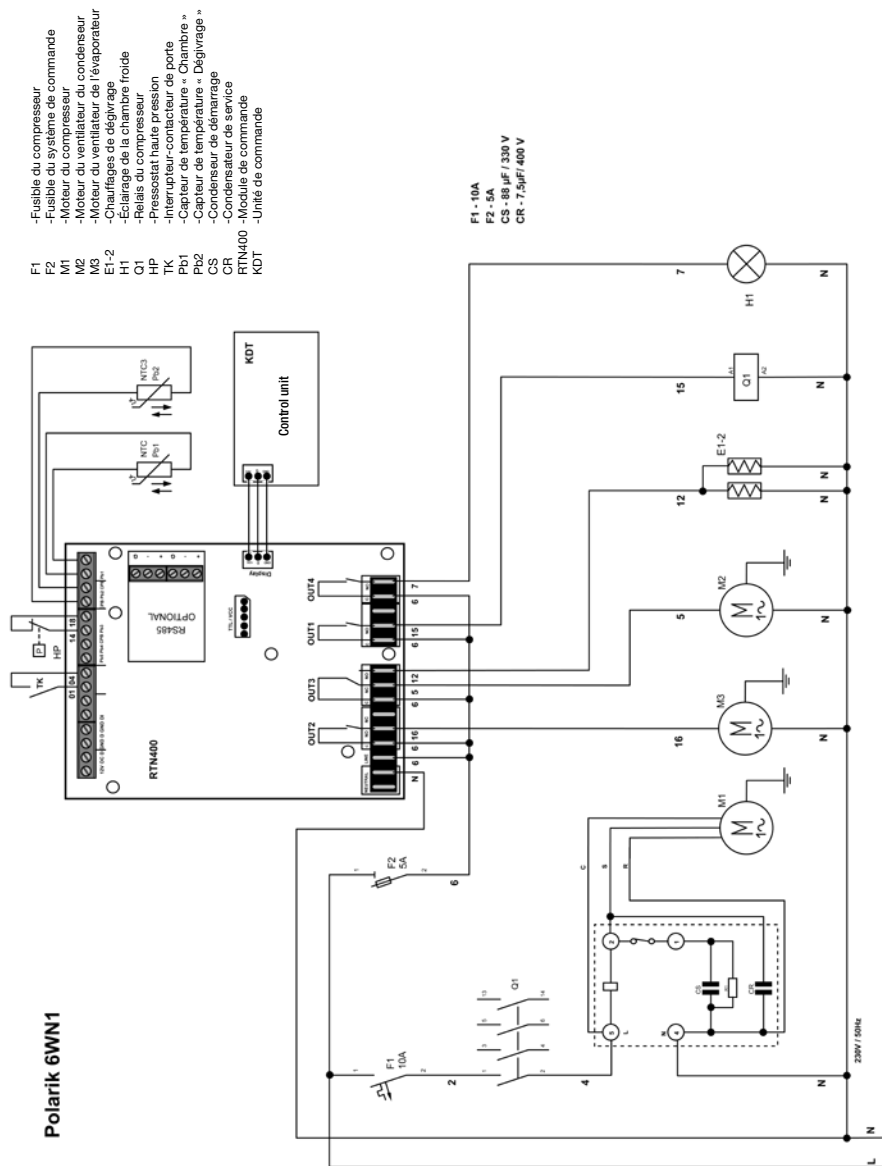


F1 - 10A  
F2 - 5A  
F3 - 5A  
CS - 88µF / 130V  
CR - 15µF / 400V  
C1 - 3µF  
C2 - 3µF

F1	- Compressor fuse
F2	- Control-system fuse
M1	- Compressor motor
M2	- Condenser-fan motor
M3	- Evaporator-fan motor
E1-2	- Defrost heaters
H1	- Cold room lamp
Q1	- Compressor relay
TK	- High-pressure relay
TK	- Door contact switch
Pb1	- Room-temperature sensor
Pb2	- Door-temperature sensor
CR	- Start capacitor
CS	- Operating capacitor
RTN400	- Control circuit board
KDT	- Control unit

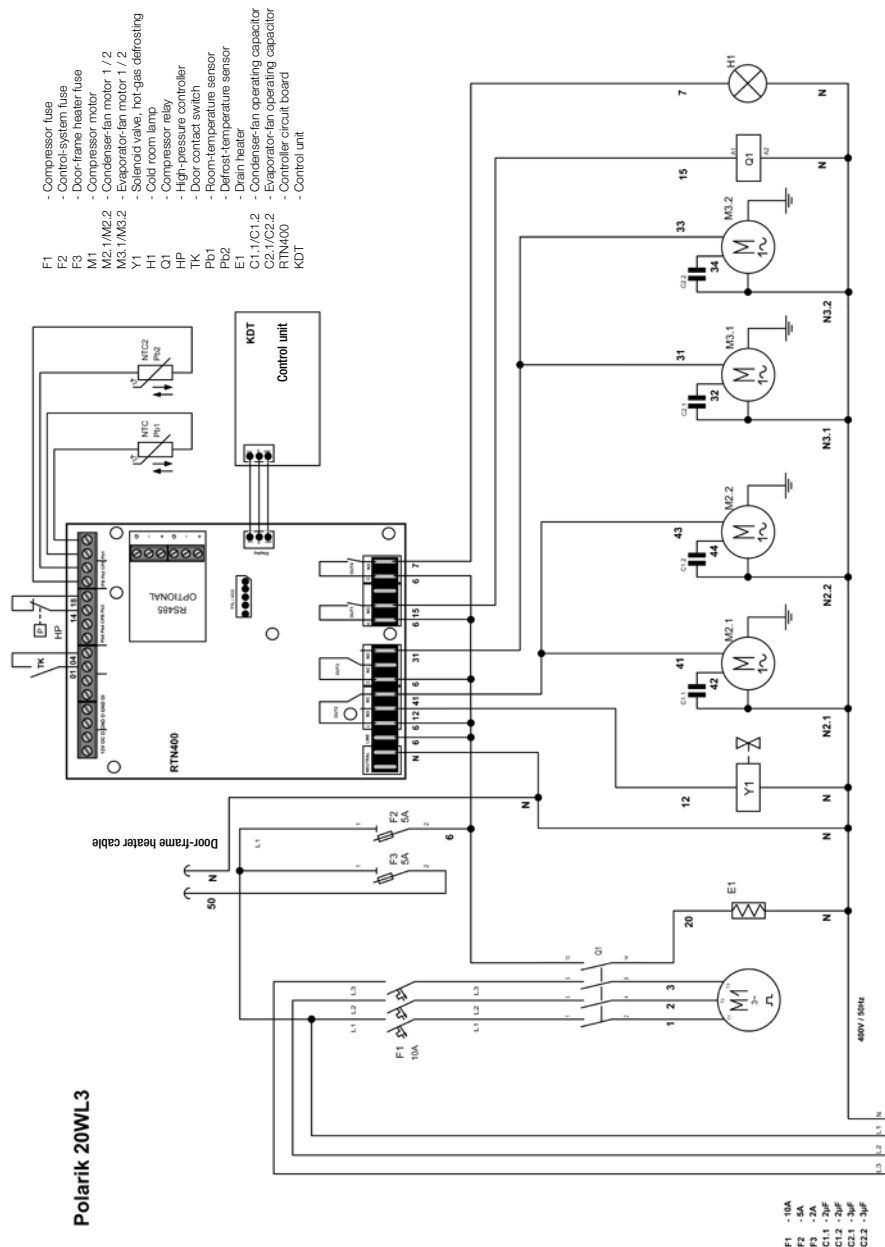


## Polarik 6WN1

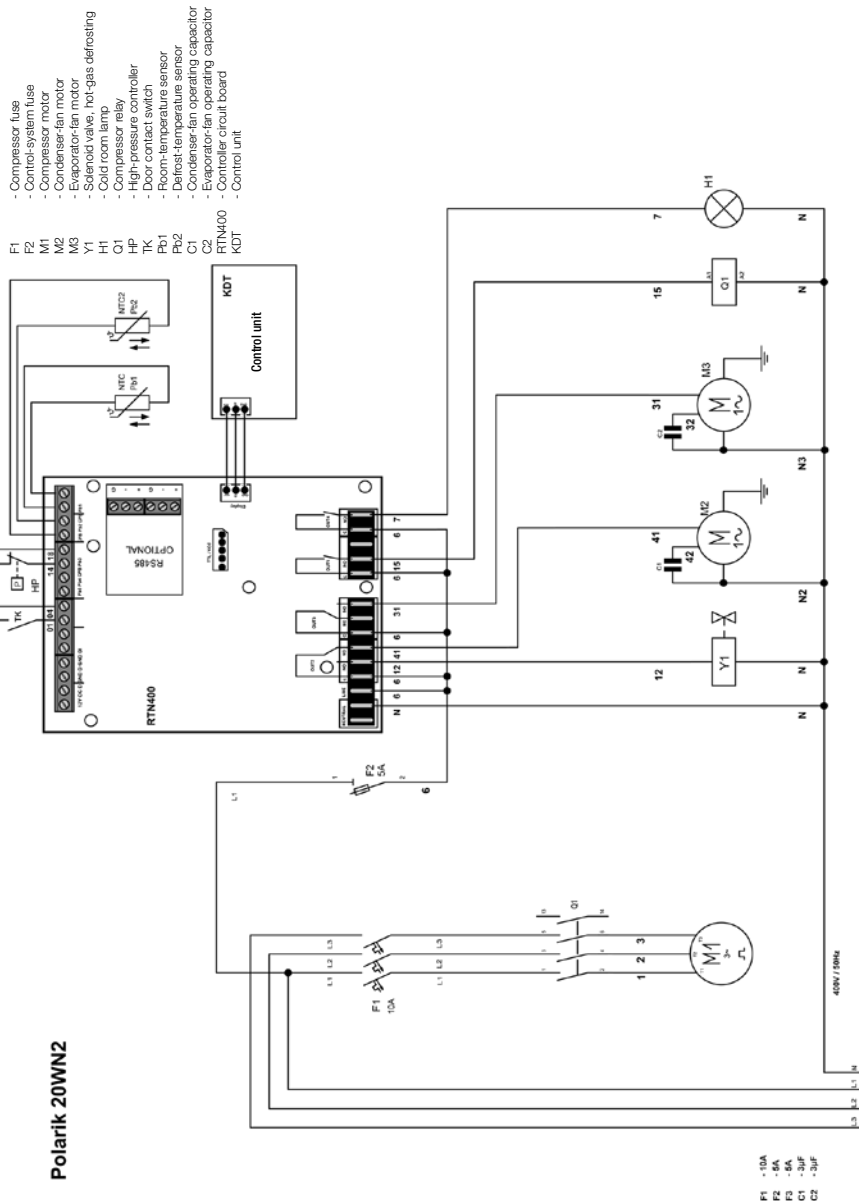




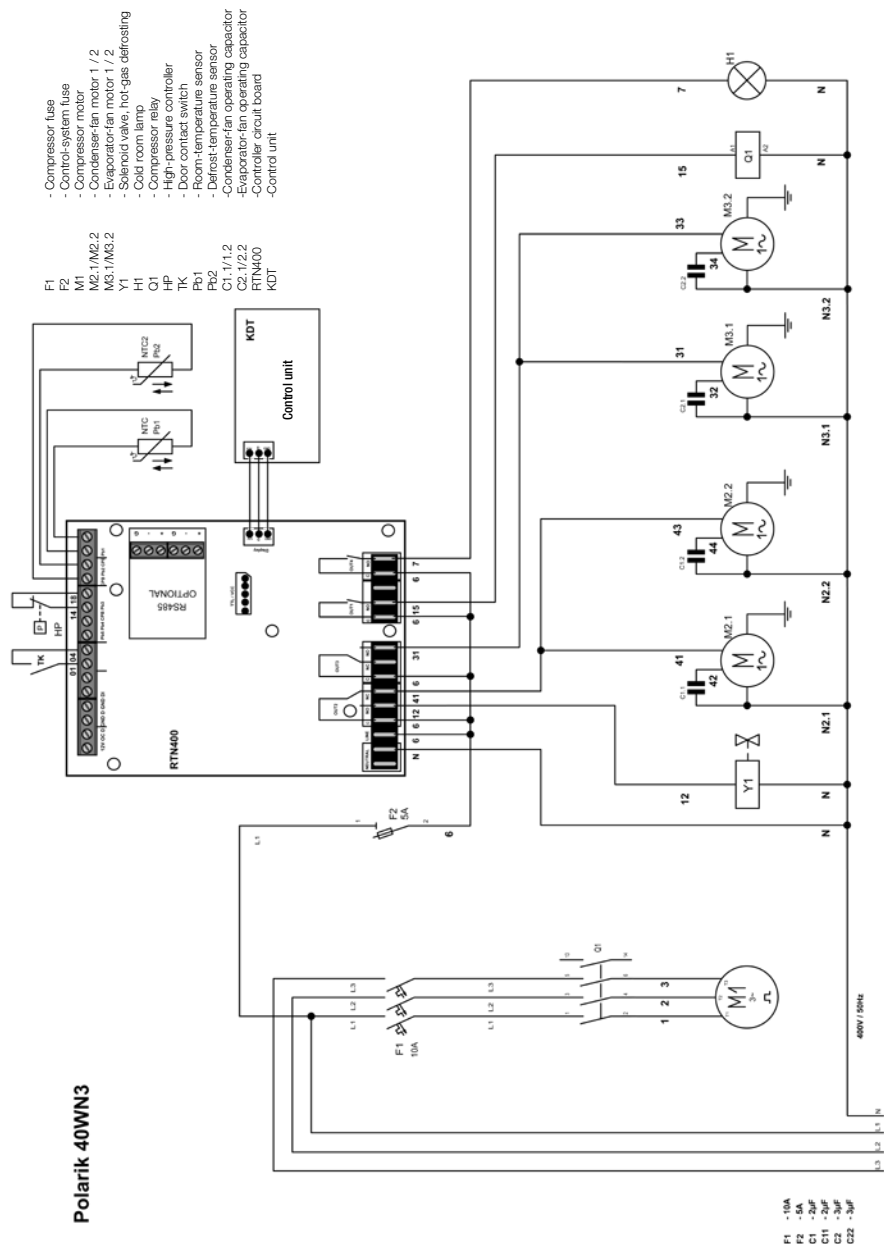
# Polarik 20WL3



**Polarik 20WN2**



# Polarik 40WN3





**GOVI GmbH**

Max-Planck-Str.5

53842 Troisdorf (Germany)

Tel.: +49(0)2241-92 29 460

e-mail: [info-polarik@govi-gmbh.de](mailto:info-polarik@govi-gmbh.de)

[www.govi-gmbh.de](http://www.govi-gmbh.de)